



SENIOR HOUSING NEWS

ARCHITECTURE & DESIGN
AWARDS



EverTrue Mason Pointe

13190 S. Outer Forty Road

Renovation/Repositioning: Building



INFO

City/State: Town & Country, Missouri

Date of Completion: Phase 1: 1/2024; Phase 2: 2/2025,
Phase 3: 10/2025

Project Size (SQ. FT): 135,000 SF Total

Owner: EverTrue

Operator: EverTrue

Architect: The Lawrence Group

Interior Design Firm: LNB Studio

Builder/Contractor: BSI Contractors

Redefining Senior Living Through Design Excellence

EverTrue Mason Pointe's Renovation of Assisted Living Memory Support Neighborhoods

Smart Repositioning for Modern Needs

Transformed existing units into a mix of studio, one-bedroom and two-bedroom spaces to meet the growing need for Memory Support services
Designs reflect today's preferences: privacy, flexibility and a true sense of home tailored to the individual

Spaces That Bring People Together

Warm lounges, vibrant dining areas and activity rooms for art, fitness and more
Outdoor courtyards and walking paths foster movement and relaxation and a continued connection with nature
Harmony Garden creates opportunities for musical expression and intergenerational connection
Digital boards keep residents informed and engaged

Leading-Edge Memory Support Innovations

Circadian lighting, digital memory boxes and percussion play instruments
Tovertafel game system, Crdl musical tool, virtual destination windows and a living wall
Color-coded doors improve wayfinding, reduce anxiety and support independence

Inclusive, Accessible, and Thoughtfully Curated

Every space designed for ease of use and inclusivity
Biophilic design boosts mood and cognitive function
Curated artwork adds personal meaning and emotional warmth

A Model for the Future of Senior Living

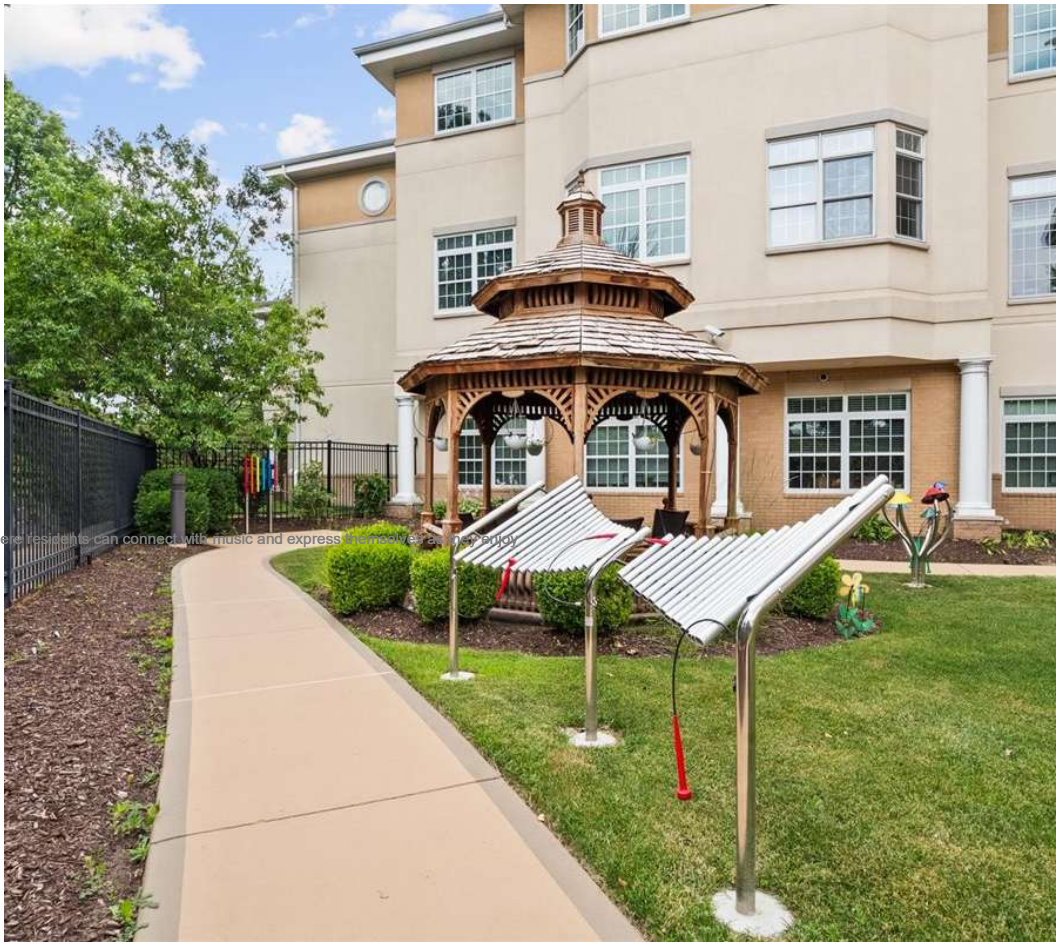
EverTrue Mason Pointe Assisted Living Memory Support's redesign creates a purposeful, connected and comfortable environment
A benchmark for excellence in higher-care senior living and memory support, this redesign enables EverTrue Mason Pointe to fully embrace the person-centered EverTrue StillYou approach to supporting people on a journey with dementia





Before: Exterior

Connecting residents with nature has always been a priority, but the remodel allowed EverTrue Mason Pointe to create spaces intentionally to meet a full range of needs and interests.



After: Exterior

The Assisted Living Memory Support area now offers a Harmony Garden where residents can connect with music and express themselves as they enjoy nature.



Before: Outdoor Connections

EverTrue Mason Pointe features a wealth of green spaces and thoughtfully curated gardens.



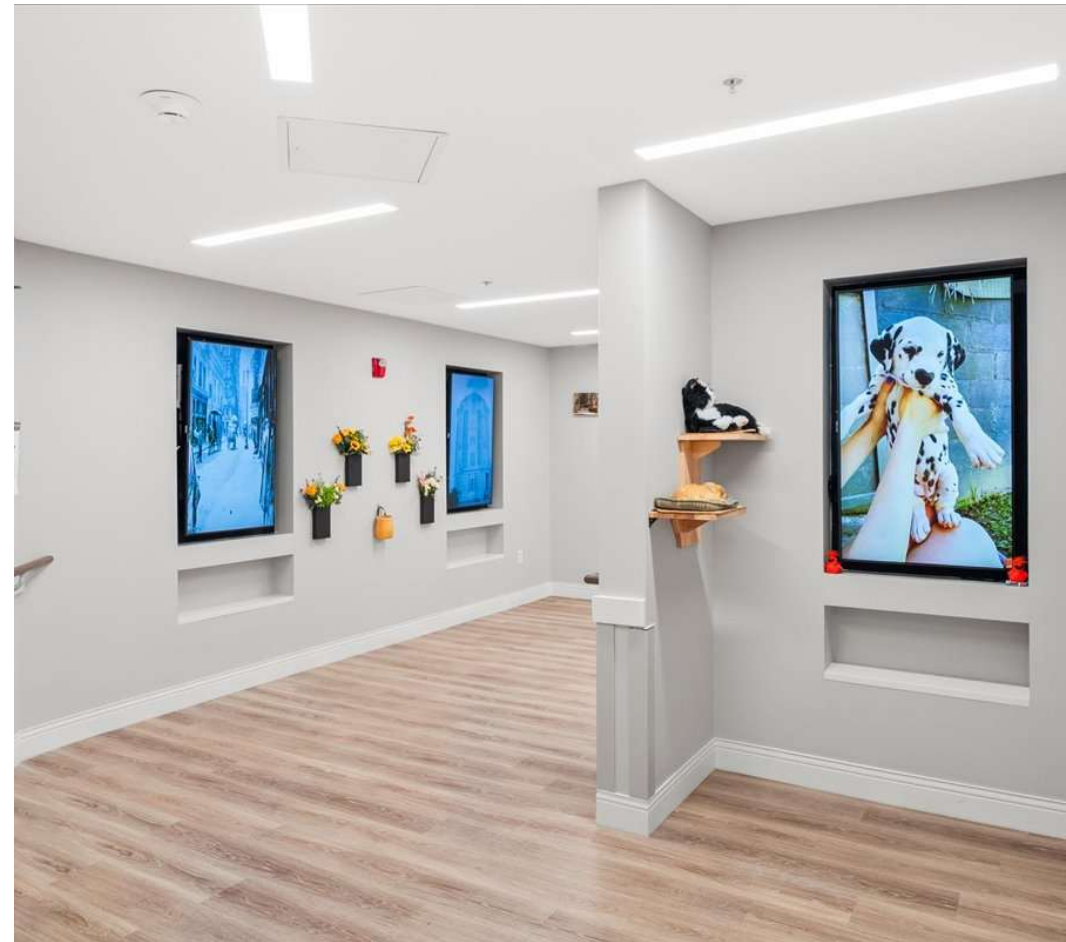
After: Outdoor Connections

We have elevated the experience with a walking path leading residents past gardens where they can engage with nature and Harmony Garden instruments where they can express themselves musically.



Before: Hallways

Hallways have been designed to meet ADA requirements and provide opportunities for residents to explore their community.



After: Sensory Paths

Hallways have been transformed into sensory pathways, where residents can explore and enjoy with all of their senses engaged.



Before: Quiet Space

The remodel provided an opportunity to reimagine spaces to create a Tranquility Room.



After: Tranquility Room

The Tranquility Room provides a special place for people to enjoy peaceful moments.



Before: Gathering Space

Spaces where residents can come together for fellowship or learning is a vital part of any community.



After: Learning & Growing Space

The remodel created an attractive space where residents can gather to learn and grow together.



Before: Common Space

With an eye to providing homey environment while also providing upscale finishes, there's always room to take things up a notch!



After: Common Space

Inspired by nature and the warmth of home, the design blends upscale, residential-style finishes with biophilic elements to create a calming and elegant environment.



Before: Dining

EverTrue is dedicated to ensuring that residents enjoy meals that meet all of their dietary and culinary needs.



After: Dining

As important as nourishment, we know that dining is also about the experience. Here residents are treated to excellent food and ambience.



Before: Common Spaces

Places to gather and share stories, play games and engage socially are the heart of EverTrue Mason Pointe.



After: Common Spaces

With updated finishes and comfortable seating and, this is the perfect spot to make a new friend.



Before: Common Space

Communal spaces provide opportunities for connection.



After: Puzzle Room

A hub for social activity, cognitive stimulation and a way to prevent isolation where residents may enjoy puzzles individually or in groups.



Before: Average Hallway Walls

Walls were neutral and designed to support independence as residents explored their community.



After: The Living Wall

A “Living Wall” of plants provides significant mental and physical health benefits by providing a direct connection to nature and creating a calming and stimulating environment.



Before: Activity Room

Space is dedicated to residents' hobbies and interests.



After: Activity Room

Space to explore Life According to You! Whether you're an artist, a scientist or something you haven't discovered yet – this is the place to try it.



Before: Gym

Providing opportunities for wellness has always been important.



After: Gym

The remodel enabled us to reimagine our gym offerings to provide world-class equipment and support.



Before Image

With a variety of studio, one-bedroom and two-bedroom units, residents can make their space their own.



After Image

We believe your bedroom is your personal sanctuary, and it has been designed to provide privacy and comfort, with attention to every detail.



Before Image

Previously residential spaces were designed in neutral tones.



After Image

Brightly colored doors help with wayfinding for those on a journey with memory loss and provide a more engaging environment.



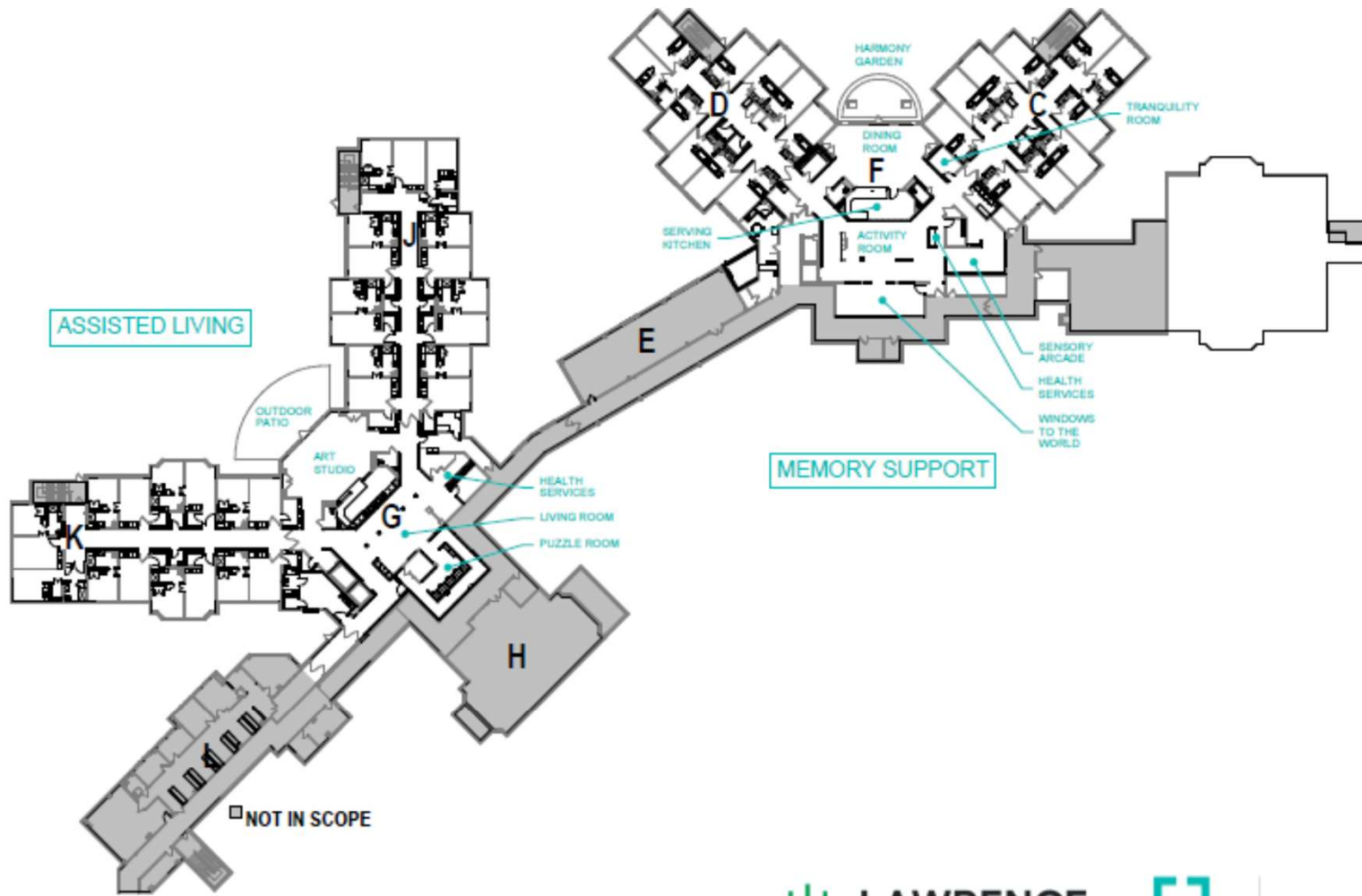
Before Image

Previously rooms had numerical markers for each address.

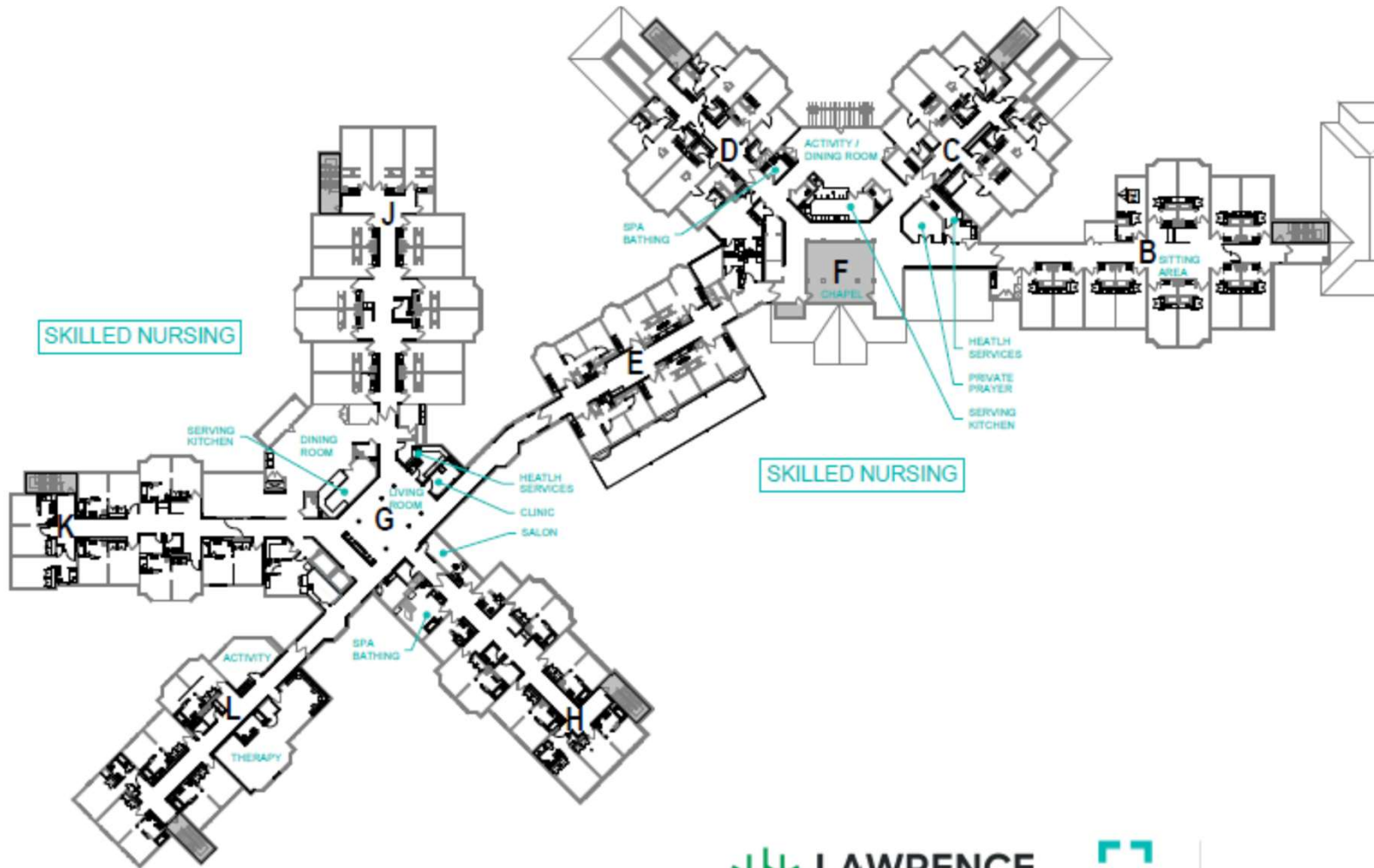


After Image

Digital markers display family photos and other meaningful images to help residents identify their residence, improving wayfinding and supporting independence.



1 | AFTER - FIRST FLOOR PLAN
 A-1 | 1" = 40'-0"



1 | AFTER - THIRD FLOOR PLAN
 A-3 | 1" = 40'-0"



Mason Pointe